



Brentfield Primary School

Children of Today, Champions for Tomorrow

Suspensions and Permanent Exclusions Policy

Head Teacher	Mrs N. Harmer
Person Responsible	Ms S. Rawat
Reviewed	October 2023
Next Review Date	October 2024

41-43 Meadow Garth, London, NW10 0SL

Tel: 020 8965 5326

Email: admin@brentfield.brent.sck.uk

Website: www.brentfield.brent.sch.uk

1. Aims

Our school aims to ensure that:

- the suspensions and exclusions process are applied fairly and consistently
- the suspensions and exclusions process are understood by governors, staff, parents and pupils
- pupils receive an education in a safe and caring environment

2. Legislation and statutory responsibilities

This policy is based on statutory guidance from the Department for Education: Suspension and permanent exclusion from maintained schools, academies and pupil referral units in England, including pupil movement - from September 2023.

It is based on the following legislation, which outlines schools' powers to exclude pupils:

- Section 51a of the Education Act 2002, as amended by the Education Act 2011
- The School Discipline (Pupil Exclusions and Reviews) (England) Regulations 2012

In addition, the policy is based on:

- Part 7, chapter 2 of the Education and Inspections Act 2006, which sets out parental responsibility for excluded pupils
- Section 579 of the Education Act 1996, which defines 'school day'
- The Education (Provision of Full-Time Education for Excluded Pupils) (England) Regulations 2007, as amended by The Education (Provision of Full-Time Education for Excluded Pupils) (England) (Amendment) Regulations 2014
- The Equality Act 2010
- Children and Families Act 2014
- The School Inspection Handbook, which defines 'off-rolling'

3. Definitions

Suspension – when a pupil is removed from the school for a fixed period.

Permanent exclusion – when a pupil is removed from the school permanently and taken off the school roll. This is sometimes referred to as an 'exclusion'.

Off-site direction – when a governing board of a maintained school requires a pupil to attend another education setting temporarily, to improve their behavior.

Parent – any person who has parental responsibility and any person who has care of the child.

Managed move – when a pupil is transferred to another school permanently. All parties, including parents and the admission authority for the new school, should consent before a managed move occurs.

For the purposes of suspensions, school day is defined as any day on which there is a school session. Therefore, INSET or staff training days do not count as a school day.

4. The Decision to Exclude or Suspend

Only the headteacher, or acting headteacher, can suspend or permanently exclude a pupil from school. A permanent exclusion will be considered as a last resort.

We are committed to following all statutory exclusions procedures to ensure that every child receives an education in a safe and caring environment.

A decision to suspend or exclude a pupil will be taken only:

- In response to serious or persistent breaches of the school's behaviour policy, and
- If allowing the pupil to remain in school would seriously harm the education or welfare of others

Before deciding whether to suspend a pupil for a fixed period or exclude permanently, the headteacher will:

- Consider all the relevant facts and evidence
- Consider if the pupil has special educational needs (SEN)
- Consider whether the pupil is especially vulnerable (e.g. the pupil has a social worker, or is a looked-after child (LAC))
- Consider whether all alternative solutions have been explored, such as off-site direction or managed moves

5. Roles and Responsibilities

The headteacher

Informing parent/carer

If the headteacher decides to suspend or exclude a pupil, the parent/carer will be informed, in person or by telephone, of the period of the suspension or exclusion and the reason(s) for it, without delay.

The parents/pupil will also be provided with the following information in writing, without delay:

- The reason(s) for the suspension or permanent exclusion
- The length of the suspension or, for a permanent exclusion, the fact that it is permanent
- Information about the parents'/pupil's right to make representations about the suspension or permanent exclusion to the governing board and, where the pupil is attending alongside parents, how they may be involved in this
- How any representations should be made
- Where there is a legal requirement for the governing board to hold a meeting to consider the reinstatement of a pupil, and that parent/carer have a right to attend the meeting, be represented at the meeting (at their own expense) and bring a friend
- That parents have the right to request that the meetings be held remotely, and how and to whom they should make this request

If the pupil is of compulsory school age, the headteacher will also notify parents without delay and by the end of the afternoon session on the first day their child is suspended or permanently excluded, that:

- For the first 5 school days of an exclusion (or until the start date of any alternative provision or the end of the suspension, where this is earlier), the parents are legally required to ensure that their child is not present in a public place during school hours without a good reason. This will include specifying on which days this duty applies
- Parents may be given a fixed penalty notice or prosecuted if they fail to do this
- If alternative provision is being arranged, the following information will be included, if possible:
- The start date for any provision of full-time education that has been arranged
- The start and finish times of any such provision, including the times for morning and afternoon sessions, where relevant
- The address at which the provision will take place
- Any information the pupil needs in order to identify the person they should report to on the first day

If the headteacher does not have all the information about the alternative provision arrangements by the end of the afternoon session on the first day of the suspension or permanent exclusion, they can provide the information at a later date but no later than 48 hours before the provision is due to start.

The only exception to this is where alternative provision is to be provided before the sixth day of a suspension or permanent exclusion, in which case the school reserves the right to provide the information with less than 48 hours' notice, with parents' consent.

If the headteacher cancels the suspension or permanent exclusion, they will notify the parents/carers without delay, and provide a reason for the cancellation.

Informing the governing board, local authority and relevant agencies

The governing board

The headteacher will, without delay, notify the governing board of:

- Any permanent exclusion, including when a suspension is followed by a decision to permanently exclude a pupil

- Any suspension or permanent exclusion which would result in the pupil being suspended or permanently excluded for a total of more than 5 school days (or more than 10 lunchtimes) in a term
- Any suspension or permanent exclusion which would result in the pupil missing a National Curriculum test or public exam
- Any suspension or permanent exclusion that has been cancelled, including the reason for the cancellation

The Local Authority

The headteacher will notify the LA of all suspensions and permanent exclusions without delay, regardless of the length of a suspension.

The notification will include:

- The reason(s) for the suspension or permanent exclusion
- The length of a suspension or, for a permanent exclusion, the fact that it is permanent

For a permanent exclusion, if the pupil lives outside the LA in which the school is located, the headteacher will also, without delay, inform the pupil's 'home authority' of the exclusion and the reason(s) for it.

The headteacher will notify the LA of any cancelled exclusions, including the reason the exclusion was cancelled.

Informing the pupil's social worker and/or virtual school head (VSH)

If a:

- Pupil with a social worker is at risk of suspension or permanent exclusion, the headteacher or designated staff member will inform the social worker as early as possible
- Pupil who is a looked-after child (LAC) is at risk of suspension or exclusion, the headteacher or Inclusion Lead will inform the VSH as early as possible

This is in order to work together to consider what factors may be affecting the pupil's behaviour, and what further support can be put in place to improve the behaviour.

If the headteacher decides to suspend or permanently exclude a pupil with a social worker/a pupil who is looked after, they will inform the pupil's social worker/the VSH, as appropriate, without delay, that:

- They have decided to suspend or permanently exclude the pupil
- The reason(s) for the decision
- The length of the suspension or, for a permanent exclusion, the fact that it is permanent
- The suspension or permanent exclusion affects the pupil's ability to sit a National Curriculum test (where relevant)
- They have decided to cancel a suspension or permanent exclusion, and why (where relevant)

The social worker/VSH will be invited to any meeting of the governing board about the suspension or permanent exclusion.

Cancelling suspensions and permanent exclusions

The headteacher may cancel a suspension or permanent exclusion that has already begun, or one that has not yet begun, but only where it has not yet been reviewed by the governing board. Where there is a cancellation:

- The parents, governing board and LA will be notified without delay
- Where relevant, any social worker and VSH will be notified without delay
- The notification must provide the reason for the cancellation
- The governing board's duty to hold a meeting and consider reinstatement ceases
- Parents will be offered the opportunity to meet with the headteacher to discuss the cancellation, which will be arranged without delay
- The pupil will be allowed back in school without delay

Any days spent out of school as a result of any exclusion, prior to the cancellation, will count towards the maximum of 45 school days permitted in any school year.

A permanent exclusion cannot be cancelled if the pupil has already been excluded for more than 45 school days in a school year or if they will have been so by the time the cancellation takes effect.

Providing education during the first 5 days of a suspension or permanent exclusion

During the first 5 days of a suspension, if the pupil is not attending alternative (AP) provision, the headteacher will take steps to ensure that achievable and accessible work is set and marked for the pupil. Online pathways may be used for this. If the pupil has a special educational need or disability, the headteacher will make sure that reasonable adjustments are made to the provision where necessary.

If the pupil is looked after or if they have a social worker, the school will work with the LA to arrange AP from the first day following the suspension or permanent exclusion. Where this is not possible, the school will take reasonable steps to set work for the pupil, including the use of online pathways.

The Governing Board

Considering suspensions and permanent exclusions

Responsibilities regarding suspensions and permanent exclusions are delegated to a panel of governors consisting of at least 3 governors.

The panel has a duty to consider parents' representations about a suspension or permanent exclusion. It has a duty to consider the reinstatement of a suspended or permanently excluded pupil in certain circumstances.

Within 14 days of receiving a request, the governing board will provide the Brent LA with information about any suspensions or exclusions within the last 12 months.

For any suspension of more than 5 school days, the governing board will arrange suitable full-time education for the pupil. This provision will begin no later than the sixth day of the suspension.

Monitoring and analysing suspensions and exclusions data

The governing board will review, challenge and evaluate the data on the school's use of suspension, exclusion, off-site direction to alternative provision, and managed moves.

The governing board will consider:

- How effectively and consistently the school's behaviour policy is being implemented
- Instances where pupils receive suspensions
- Interventions in place to support pupils at risk of suspension or permanent exclusion
- Patterns, including any indications which may highlight where policies or support are not working
- The characteristics of suspended and permanently excluded pupils
- The adequacy of placements of pupils in alternative provision
- The cost implications of directing pupils off-site

The local authority (LA)

For permanent exclusions, the LA will arrange suitable full-time education to begin no later than the sixth school day after the first day of the exclusion.

For pupils who are looked after or have social workers, the LA and the school will work together arrange suitable full-time education to begin from the first day of the exclusion.

6. Considering Reinstatement of a Pupil

The governing body will consider the reinstatement of an excluded pupil within 15 school days of receiving the notice of the exclusion if:

- The exclusion is permanent
- It is a fixed-term exclusion which would bring the pupil's total number of school days of exclusion to more than 15 in a term
- It would result in a pupil missing a national curriculum test

Where the pupil has been suspended, and the suspension does not bring the pupil's total number of days of suspension to more than 5 in a term, the governing board must consider any representations made by

parents. However, it is not required to arrange a meeting with parents and it cannot direct the headteacher to reinstate the pupil.

Where the pupil has been suspended for more than 5, but not more than 15 school days, in a single term, and the parents make representations to the board the governing board will consider and decide on the reinstatement of a suspended pupil within 50 school days of receiving notice of the suspension. If the parents do not make representations, the board is not required to meet and it cannot direct the headteacher to reinstate the pupil.

Where a suspension or permanent exclusion would result in a pupil missing a National Curriculum test, the governing board will, as far as reasonably practicable, consider and decide on the reinstatement of the pupil before the date of the exam or test. If this is not practicable, the chair of the governing board (or the vice-chair, if necessary) may consider the suspension or permanent exclusion and decide whether or not to reinstate the pupil.

The following parties will be invited to a meeting of the governing board and allowed to make representations or share information:

- Parents (and, where requested, a representative or friend)
- The pupil, if it would be appropriate to their age and understanding
- The headteacher
- The pupil's social worker, if they have one
- The VSH, if the pupil is looked after
- A representative of the local authority

Governing board meetings can be held remotely at the request of parents See section 9 for more details on remote access to meetings.

The governing board will try to arrange the meeting within the statutory time limits set out above and must try to have it at a time that suits all relevant parties. However, its decision will not be invalid simply on the grounds that it was not made within these time limits.

The governing board can either:

- Decline to reinstate the pupil, or
- Direct the reinstatement of the pupil immediately, or on a particular date (except in cases where the board cannot do this – see earlier in this section)

In reaching a decision, they will consider:

- Whether the decision to suspend or permanently exclude was lawful, reasonable, and procedurally fair
- Whether the headteacher followed their legal duties
- The welfare and safeguarding of the pupil and their peers
- Any evidence that was presented to the governing board
- Whether or not a fact is true 'on the balance of probabilities'.

The clerk will be present when the decision is made.

Minutes will be taken of the meeting, and a record kept of the evidence that was considered. The outcome will also be recorded on the pupil's record, and copies of relevant papers will be kept with this record.

The governing board will notify, in writing, the following stakeholders of its decision, along with reasons for its decision, without delay:

- The parents
- The headteacher
- The pupil's social worker, if they have one
- The VSH, if the pupil is looked after
- The local authority

- The pupil's home authority, if it differs from the school's

Where an exclusion is permanent and has decided not to reinstate the pupil, the notification of decision will also include the following:

- The fact that it is a permanent exclusion
- Notice of parents' right to ask for the decision to be reviewed by an independent review panel
- The date by which an application for an independent review must be made (15 school days from the date on which notice in writing of the governing board's decision is given to parents)
- The name and address to which an application for a review and any written evidence should be submitted
- That any application should set out the grounds on which it is being made and that, where appropriate, it should include reference to how the pupil's special educational needs (SEN) are considered to be relevant to the permanent exclusion
- That, regardless of whether the excluded pupil has recognised SEN, parents have a right to require the LA to appoint an SEN expert to advise the review panel
- Details of the role of the SEN expert and that there would be no cost to parents for this appointment
- That parents must make clear if they wish for an SEN expert to be appointed in any application for a review
- That parents may, at their own expense, appoint someone to make written and/or oral representations to the panel, and parents may also bring a friend to the review
- That, if parents believe that the permanent exclusion has occurred as a result of unlawful discrimination, they may make a claim under the Equality Act 2010 to the first-tier tribunal (special educational needs and disability), in the case of disability discrimination, or the county court, in the case of other forms of discrimination. These should be lodged within 6 months of the date on which the discrimination is alleged to have taken place

7. Independent Review

If parents apply for an independent review, the LA will arrange for an independent panel to review the decision of the governing board not to reinstate a permanently excluded pupil.

Applications for an independent review must be made within 15 school days of notice being given to the parents by the governing board of its decision to not reinstate a pupil.

Independent reviews can be held remotely at the request of parents.

A panel of 3 or 5 members will be constituted. Where a 5-member panel is constituted, 2 members will come from the school governor's category and 2 members will come from the headteacher category.

- A lay member to chair the panel who has not worked in any school in a paid capacity, disregarding any experience as a school governor or volunteer
- Current or former school governors who have served as a governor for at least 12 consecutive months in the last 5 years, provided they have not been teachers or headteachers during this time
- Headteachers or individuals who have been a headteacher within the last 5 years

A person may not serve as a member of a review panel if they:

- Are a member of the LA of the excluding school
- Are the headteacher of the excluding school, or have held this position in the last 5 years
- Are an employee of the LA or the governing board, of the excluding school (unless they are employed as a headteacher at another school)
- Have, or at any time have had, any connection with the LA school, governing board, parents or pupil, or the incident leading to the exclusion, which may question impartiality
- Have not had the required training within the last 2 years (see appendix 1 for what training must cover)

The panel must consider the interests and circumstances of the pupil, including the circumstances in which the pupil was permanently excluded, and have regard to the interests of other pupils and people working at the school.

The parents will be made aware of their right to attend and participate in the review meeting and the pupil should be enabled to make representations on their own behalf, should they desire to.

Where a SEN expert is present, the panel must seek and have regard to the SEN expert's view of how SEN may be relevant to the pupil's permanent exclusion.

Where a social worker is present, the panel must have regard to any representation made by the social worker of how the pupil's experiences, needs, safeguarding risks and/or welfare may be relevant to the pupil's permanent exclusion.

Where a VSH is present, the panel must have regard to any representation made by the social worker of how any of the child's background, education and safeguarding needs were considered by the headteacher in the lead up to the permanent exclusion, or are relevant to the pupil's permanent exclusion.

Following its review, the independent panel will decide to do 1 of the following:

- Uphold the governing board's decision
- Recommend that the governing board reconsiders reinstatement
- Quash the governing board's decision and direct that they reconsider reinstatement (only if it judges that the decision was flawed)

New evidence may be presented, though the school cannot introduce new reasons for the permanent exclusion or the decision not to reinstate. The panel must disregard any new reasons that are introduced.

In deciding whether the decision was flawed, and therefore whether to quash the decision not to reinstate, the panel must only take account of the evidence that was available to the governing board at the time of making its decision. This includes any evidence that the panel considers would, or should, have been available to the governing board and that it ought to have considered if it had been acting reasonably.

If evidence is presented that the panel considers it is unreasonable to expect the governing board to have been aware of at the time of its decision, the panel can take account of the evidence when deciding whether to recommend that the governing board reconsider reinstatement.

The panel's decision can be decided by a majority vote. In the case of a tied decision, the chair has the casting vote.

Once the panel has reached its decision, the panel will notify all parties in writing without delay.

This notification will include:

- The panel's decision and the reasons for it
- Where relevant, details of any financial readjustment or payment to be made if the governing board does not subsequently decide to offer to reinstate the pupil within 10 school days
- Any information that the panel has directed the governing board to place on the pupil's educational record

8. School Register

A pupil's name will be removed from the school admissions register if:

- 15 school days have passed since the parents were notified of the permanent exclusion panel's decision to not reinstate the pupil and no application has been made for an independent review panel, or
- The parents have stated in writing that they will not be applying for an independent review panel

Where an application for an independent review has been made, the governing board will wait until that review has concluded before removing a pupil's name from the register.

Where alternative provision has been made for a suspended pupil and they attend it, code B (education off-site) or code D (dual registration) will be used on the attendance register.

Where a pupil's name is to be removed from the school admissions register because of a permanent exclusion, the school will make a return to the LA using their return form.

9. Returning from a Suspension

Following a suspension, a re-integration meeting will be held involving the pupil, parents, a member of senior staff and other staff, where appropriate.

The following measures may be implemented when a pupil returns from a suspension:

- Being placed on a Steps to Success monitoring
- Referral to an external agency for additional support or assessment
- Referral to within school support (Place2Be, Inclusion Team Support)

10. Remote Access Meeting

Parents can request that a governing board meeting, or independent review panel be held remotely.

In case of extraordinary or unforeseen circumstances, which mean it is not reasonably practicable for the meeting to be held in person, the meeting will be held remotely.

Remotely accessed meetings are subject to the same procedural requirements as in-person meetings.

The governing board and LA should make sure that the following conditions are met before agreeing to let a meeting proceed remotely:

- All the participants have access to the technology which will allow them to hear, speak, see and be seen
- All the participants will be able participate fully
- The remote meeting can be held fairly and transparently

Social workers and the VSH always have the option of joining remotely, whether the meeting is being held in person or not, if they can meet the conditions for remote access listed above.

The meeting will be rearranged to an in-person meeting without delay if technical issues arise that can't be reasonably resolved and:

- Compromise the ability of participants to contribute effectively, or
- Prevent the meeting from running fairly and transparently

11. Monitoring

The school will collect data on the following:

- Attendance, permanent exclusions and suspensions
- Use of pupil referral units, off-site directions and managed moves

The data will be presented every week by the Inclusion Lead to the Headteacher via weekly Inclusion Meetings and the Headteacher will report termly data to the governing board.

12. Links to Other Policies

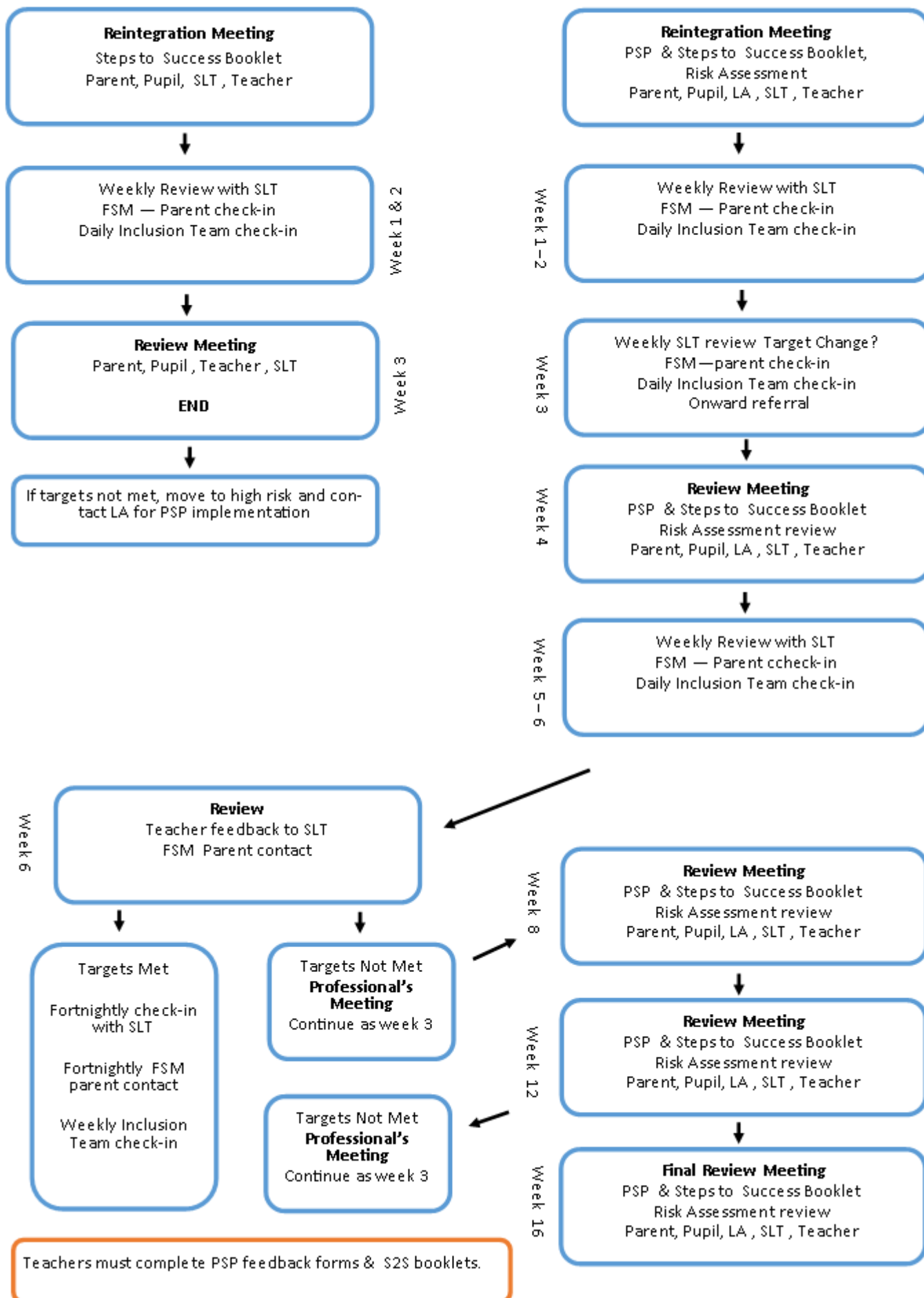
This policy links to the following policies:

- Equality information and objectives
- Behaviour policy
- Special educational needs information report and policy

External Suspension

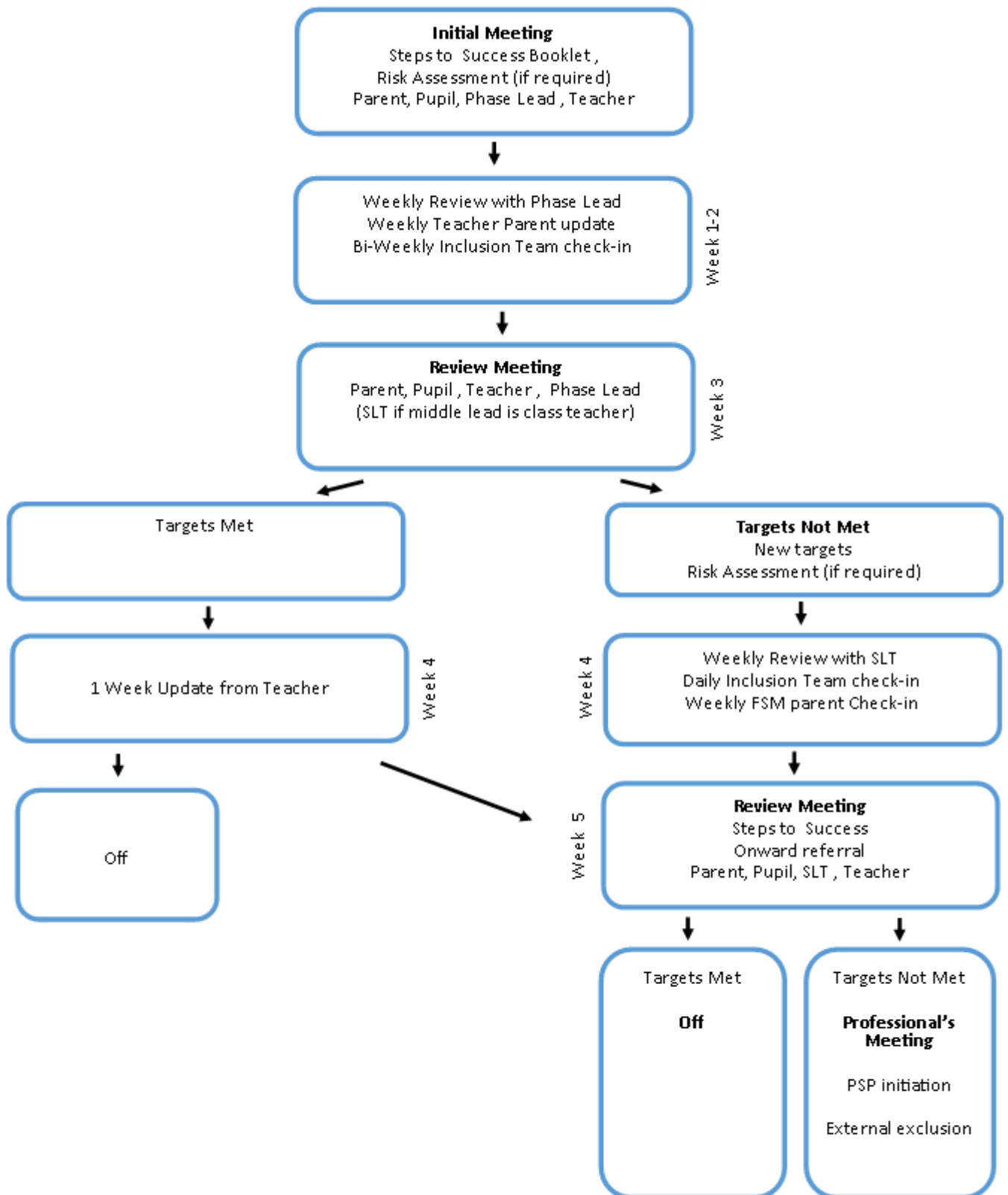
Low Risk

High Risk



3 CPOMS incidents over 2 weeks

Internal Suspension



Teachers, Pupil & Parent must complete Steps to Success booklets.

